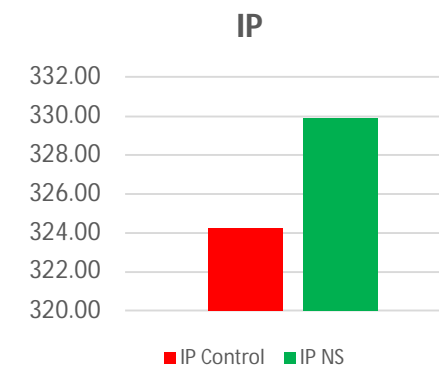
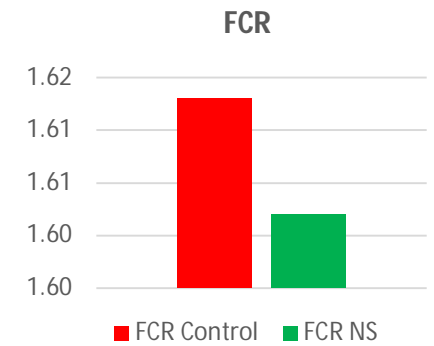
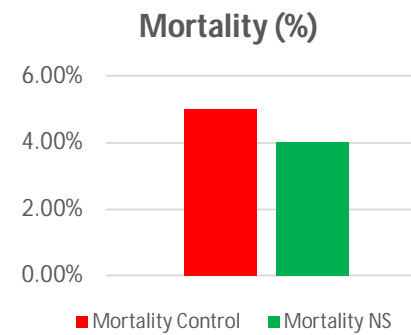


1. BROILER

DUKUH HOUSE - CLOSED HOUSE

SUBJECT	NS	CONTROL
Chick In (Head)	16.000,00	16.000,00
Chick Out (Head)	15.353,00	15.197,00
Mortality (Head)	647,00	803,00
Mortality (%)	4,04%	5,02%
Difference of Mortality	0,98%	
Body Weight - BW (Kg)	28.753,00	28.454,00
Feed Intake (Kg)	46.062,00	45.896,00
Average of BW (Kg)	1,87	1,87
<i>Difference of BW(Kg)</i>	0,00	
FCR	1,60	1,61
<i>Difference of FCR</i>	0,01	
IP	329,93	324,27
<i>Difference of IP</i>	5,66	

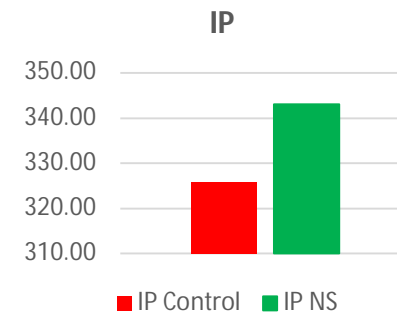
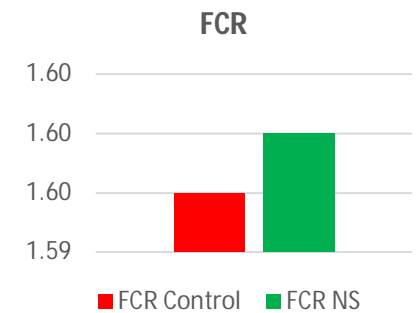
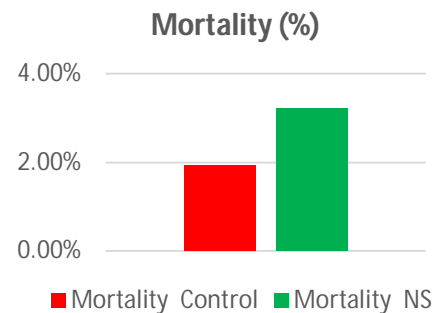


1. BROILER

DEPOK HOUSE - SEMI CLOSED HOUSE

SUBJECT	NS	CONTROL
Chick In (Head)	15.300,00	16.000,00
Chick Out (Head)	14.806,00	15.688,00
Mortality (Head)	494,00	312,00
Mortality (%)	3,23%	1,95%
Difference of Mortality	-1,28%	
Body Weight - BW (Kg)	26.812,00	28.274,00
Feed Intake (Kg)	42.792,00	45.097,00
Average of BW (Kg)	1,81	1,80
<i>Difference of BW(Kg)</i>	0,01	
FCR	1,60	1,59
<i>Difference of FCR</i>	-0,001	
IP	343,13	325,86
<i>Difference of IP</i>	17,27	

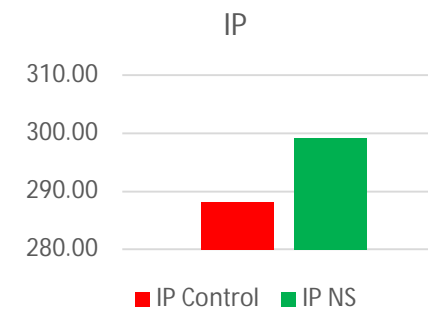
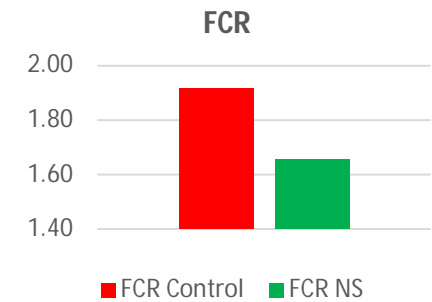
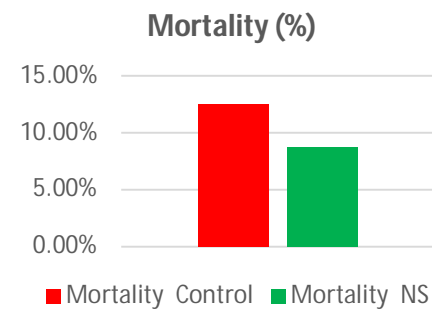
Note. Strain quality of DOC NS House lower than Control House



1. BROILER

DUKUH HOUSE - OPEN HOUSE

SUBJECT	NS	CONTROL
Chick In (Head)	6.000,00	6.000,00
Chick Out (Head)	5.475,00	5.248,00
Mortality (Head)	525,00	752,00
Mortality (%)	8,75%	12,53%
Difference of Mortality	3,78%	
Body Weight - BW (Kg)	9.513,00	9.284,00
Feed Intake (Kg)	15.754,00	17.802,00
Average of BW (Kg)	1,74	1,77
<i>Difference of BW(Kg)</i>	-0,03	
FCR	1,66	1,92
<i>Difference of FCR</i>	0,26	
IP	299,19	288,20
<i>Difference of IP</i>	10,99	



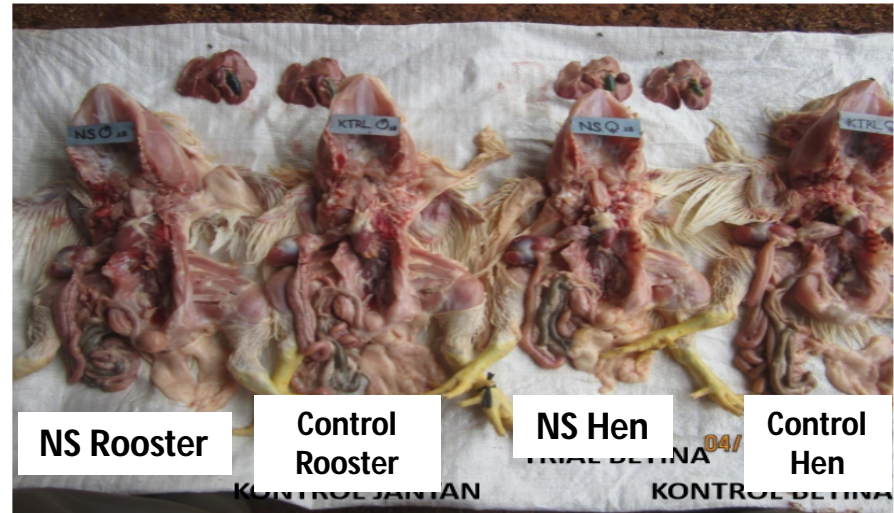
2. ORGAN BROILERS



NS
Rooster - Hen



CONTROL
Rooster - Hen



NS Rooster Control Rooster NS Hen Control Hen



NS Rooster Control Rooster



NS Hen Control Hen



NS Rooster

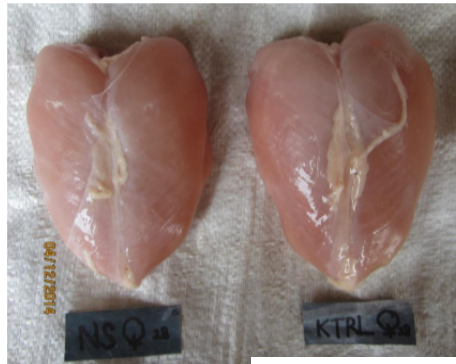


Control Rooster

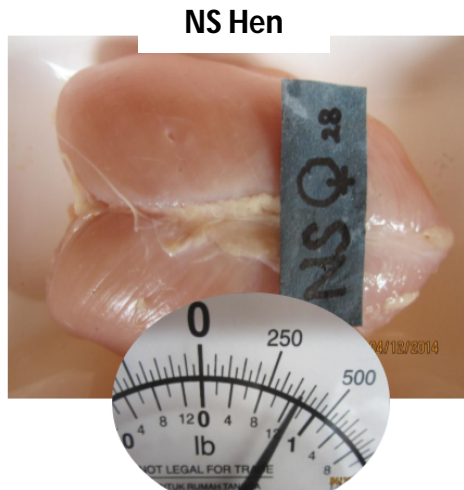
2. ORGAN BROILERS



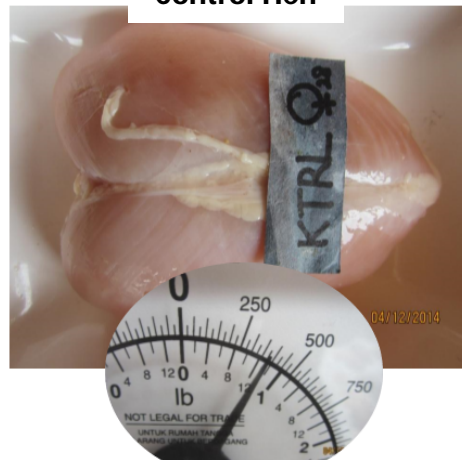
NS Rooster Control Rooster



NS Hen Control Hen



NS Hen



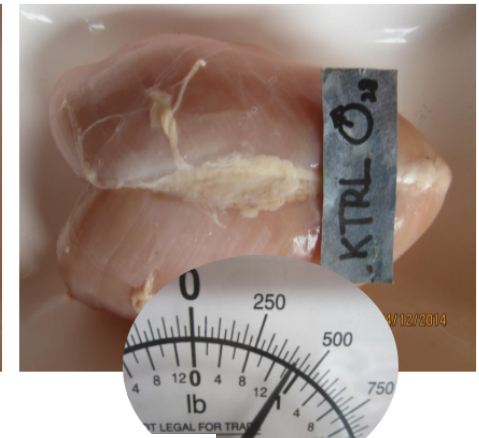
Control Hen

NS Rooster



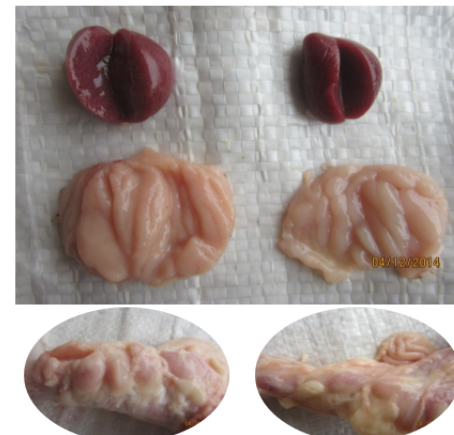
NS Rooster

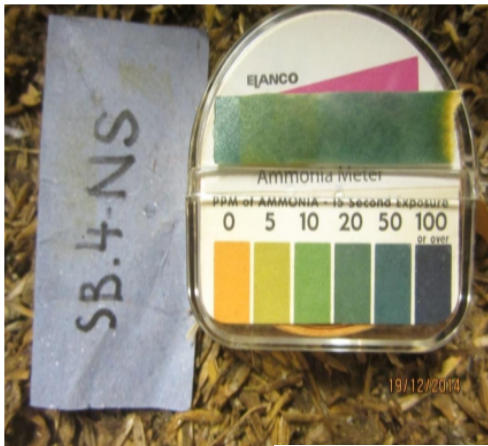
Control Rooster



Control Rooster

NS Hen Control Hen





3. HOUSE CONDITION



TRIAL

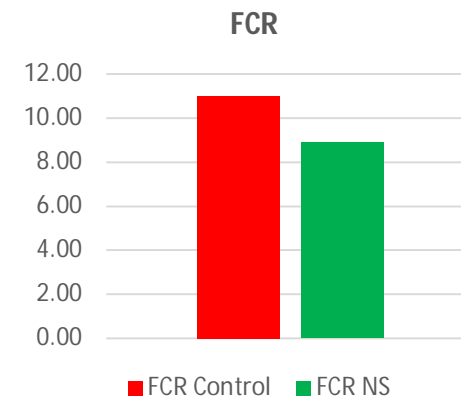
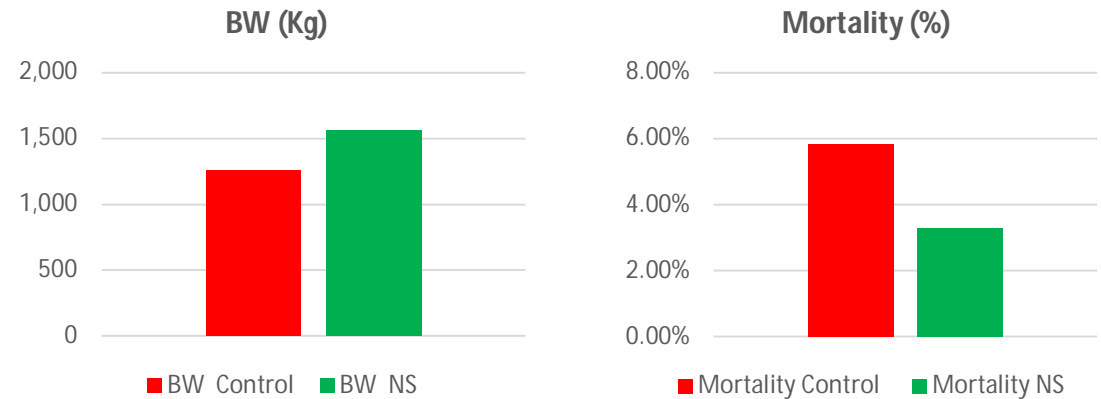


KONTROL

4. LAYER

LEGOK HOUSE

SUBJECT	NS	CONTROL
Chick in (Head)	3.000,00	3.000,00
BW DOC (GR)	33,00	33,00
BW-Week 15	1.560,00	1.260,00
<i>Difference of BW</i>	300	
Mortality - wk 1-14 (Head)	86,00	153,00
Mortality - wk 15 (Head)	13,00	22,00
Mortality Total (Head)	99,00	175,00
Mortality (%)	3,30%	5,83%
<i>Difference of Mortality</i>	2,53%	
Feed Intake - wk 1-14 (Kg)	11.300	11.300
Feed Intake - wk 15 (Kg)	2.600	2.600
Feed Intake Total-wk 1-15 (Kg)	13.900,00	13.900,00
FCR	8,91	11,03
<i>Difference of FCR</i>	2,12	



4. LAYER



Layer Control



Layer NS

Layer 15 weeks



Layer Control



Layer NS

4. LAYER



Control (Left), NS (Right)



Control (Left), NS (Right)

5. SUMMARY of POULTRY

1. Mortality rate of broiler with SAPUTRA Nutrient, is lower than Control, the difference of mortality is up to 3%.
2. FCR of broiler with SAPUTRA is more efficient than Control up to 0.26.
3. Performance Index level broiler with SAPUTRA is higher than Control, the difference up to 17, 27
4. Beside FCR & Mortality, growth rate in Layer with SAPUTRA is higher than Control.
5. Egg shells of Layer is thicker (brownier in color), than Control, means it more resistant to cracking.
6. From the results of the surgery, it appears that the organs of the chicken with NS is bigger than Control.
7. Humidity of control house more higher than House with SAPUTRA